

Dataminr[®] COVID-19

In late 2019, an outbreak of respiratory disease caused by a novel (new) coronavirus—now known as COVID-19—simmered for weeks in Wuhan, China before claiming its first victim on January 10, 2020. Dataminr first detected the outbreak of COVID-19 within public social media posts at 9:11 a.m. EST on Dec 30, 2019, providing clients with the earliest warning in advance of the U.S. government's announcement 7 days later.

Dataminr "has been instrumental in understanding what's happening on the ground outside of official narratives."

Public Health Agency

"The automatic translation of sources allows us to understand content coming from China much faster and respond much quicker."

Public Health Agency

Continuous coverage of a developing outbreak

Translations

Dataminr's AI platform understands approximately 80 languages, translating information from across the globe into English captions. From December 2019, Dataminr has processed real-time information related to the spread of COVID-19 in more than 75 languages.



DATAMINR ALERT

JAN 6, 2020 4:20 a.m. EST

Taiwan's Center for Disease Control says 867 passengers on flights from Wuhan, China to Taiwan quarantined after pneumonia cases detected in Wuhan.

TaiwanCDC via Twitter

Unpredictable Hot Spots

In the earliest days of the outbreak, it was unknown when and where new cases would appear outside of China. Dataminr's AI platform was able to quickly alert on the first cases in the United States, Iran, Italy, and elsewhere.



DATAMINR ALERT

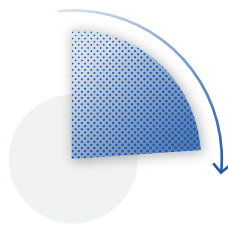
JAN 15, 2020 7:24 p.m. EST

First case of new Wuhan coronavirus confirmed in 30-year-old man in Kanagawa Prefecture, Japan.

Jiji Press via Twitter

Speed

Dataminr's AI platform processes hundreds of millions of new, public data points every hour and updates its clients as meaningful developments emerge. These alerts often precede reports from major news outlets by hours.



DATAMINR ALERT

JAN 16, 2020 6:41 a.m. EST

Second death from unknown pneumonia strain reported in Wuhan, China, three other "critically ill" patients now in stable condition.

Local source via Sina Weibo

Global Coverage

Dataminr's AI platform processes live data from more than 200,000 public data sources. In China, where major social media and other information sources are censored, Dataminr AI processed raw information from Sina Weibo, blogs and other sources.



DATAMINR ALERT

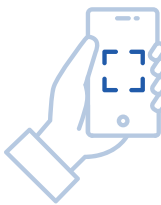
JAN 22, 2020 8:28 a.m. EST

Citizens advised not to leave Wuhan, China and airport operations, public transit services to shut down beginning 10:00 on Thursday.

Government announcement via Sina Weibo

Eyewitness Information

Dataminr's AI platform includes on-the-ground information from eyewitnesses, going beyond official statements and major media.



DATAMINR ALERT

FEB 12, 2020 8:02 a.m. EST

Person purportedly suffering from coronavirus seen convulsing on ground as health personnel respond in Singapore.

Witness video via TikTok

"Coronavirus" in public social media

